



## Frankel Malocclusion Orthodontic Functional Appliance 13-16 Hours During Night

Our Product Introduction

for more products please visit us on [adidentalab.com](http://adidentalab.com)

### Basic Information

- Place of Origin: Shenzhen, China
- Brand Name: ADL
- Certification: ISO/CE/FDA
- Minimum Order Quantity: Negotiable
- Price: Negotiable
- Packaging Details: Plastic bags and box
- Delivery Time: 72 Hours
- Payment Terms: Paypal or T/T
- Supply Ability: 630 Technicians

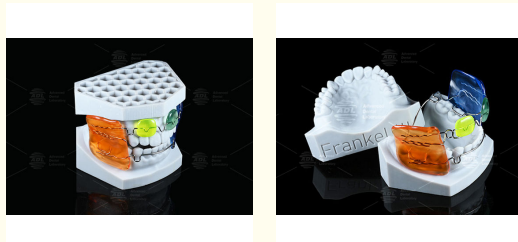


### Product Specification

- Type: Frankel
- When Wear It: Wear It At Night For 13-16 Hours
- Durability: High
- Color: A Lot Colors
- Function: Functional Malocclusion
- Age: Children And Adult
- Highlight: **Frankel Malocclusion Advanced Dental Laboratory**, **Frankel Malocclusion Functional Appliance**, **Advanced Dental Laboratory Frankel Malocclusion**



### More Images



### Product Description

Frankel Durability Functional Malocclusion Wearable For 13-16 Hours During The Night

Our F

## Product Description:

The Frankel Functional Appliance is part of the Frankel family of orthodontic devices, which have been used by orthodontic professionals for many years to help correct malocclusion issues. The Frankel is an updated version of the original Frankel appliance, and it has been designed with the latest technology and dental science in mind.

One of the key benefits of the Frankel is its high level of durability. The appliance is made from high-quality materials, which means that it can withstand the wear and tear of everyday use. This makes it an excellent choice for anyone looking for a long-lasting and reliable orthodontic device.

Another great feature of the Frankel is its wide range of colors. The appliance comes in a lot of different colors, which means that it can be customized to suit the individual preferences of the wearer. This makes it a fun and fashionable choice for anyone looking to improve their dental health and appearance.

The Frankel is a functional appliance, which means that it is designed to correct malocclusion issues by repositioning the teeth and jaw. It is particularly effective at treating Class II malocclusions, which are characterized by an overbite or a protruding upper jaw. By using the Frankel appliance, orthodontic professionals can help their patients achieve a more balanced and natural bite.

If you are looking for a high-quality orthodontic appliance that is both functional and fashionable, the Frankel is an excellent choice. With its advanced technology, wide range of colors, and high durability, it is the perfect solution for anyone looking to improve their dental health and appearance.

Key Features:

**Functional Malocclusion Correction**

**Frankel 2nd Generation Appliance**

**Durable and Long-lasting**

**Available in a Wide Range of Colors**

**Suitable for Children and Adults**

## Features:

**Product Name:** Frankel

**Function:** Functional Malocclusion

**Age:** Children And Adult

**Color:** A Lot Colors

**Type:** Frankel

**Durability:** High

Frankel 2nd Generation, Frankel II Orthodontic Device, Frankel II Orthodontic Device

## Technical Parameters:

Type	Frankel Functional Appliance
Durability	High
When wear it	Wear It At Night For 13-16 Hours
Color	A Lot Colors
Age	Children And Adult
Function	Functional Malocclusion

## Applications:

The Frankel Treatment System is suitable for both children and adults, making it a versatile option for dental professionals. Its high durability also ensures long-lasting use for patients.

The Frankel Functional Appliance comes in a variety of colors, allowing patients to choose a style that suits their preferences. The minimum order quantity is negotiable, and pricing can also be discussed depending on the order size.

Plastic bags and boxes are used for packaging, and delivery time is typically within 72 hours. Payment can be made through Paypal or T/T. ADL has a supply ability of 630 technicians, ensuring that orders can be fulfilled in a timely manner.

The Frankel Removable Appliance is ideal for various functional malocclusion scenarios, including overbite, underbite, and crossbite. Dental professionals can use this product to correct and align teeth, making it an essential tool in orthodontic treatment.



**Advanced Dental Laboratory**



+86 18665847934



info@adidentalab.com



adidentalab.com

Plant 1, Fuqiao District 2, Qiaotou Community, Fuhai Street, Baoan District, Shenzhen City, Guangdong Province, P.R.China